

YORLAB® MANUAL ROTARY MICROTOME (NEW) **Model No.: YSL / YSI-055**



Specifications:

- For best performance, accuracy ease. Stability is vital in manual microtome and YORLAB YSI-055 can live up to workload requirements of even in demanding laboratories.
- The superior precision of new accessories will add up expediency to block to knife approach as well as specimen point of reference.

Safety During Sectioning :

- Protection is assured by incorporated black finger protection guard of the knife holder that exceptionally safeguards the blade edge. When used correctly the integrated finger protection guard rules out potential injuries because it can even remain on the blade edge during sectioning.

Well – located Storage Area:

- An incorporated storage tray makes certain subsidiary tools are in hand at all the times.

Trouble Free operation:

- Ergonomics and user comfort were key concern for the placement of coarse feed wheel, which is located close to the operator.

- The mechanical trimming function, conveniently positioned next to coarse feed wheel, purge the need to turn coarse feed wheel during trimming.

Spacious Section waste tray:

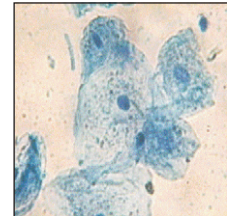
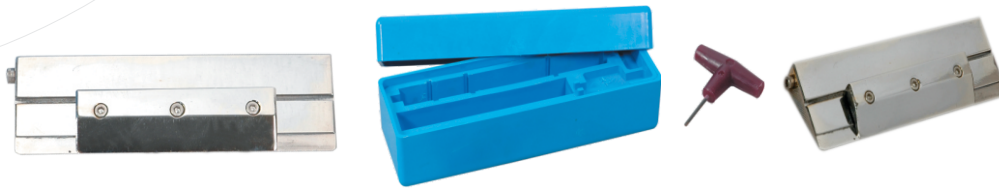
- The spacious section waste tray consistently gathers sectioning wreckage.
- Accurate specimen orientation with clear zero reference point.
- This new orientation technique sets innovative standards of precision and is very effortless to operate.
- Calibrated controls make it easy to fiddle with a specimen to an exact zero position specified by assessable variable on the x/y axis for re-cuts

Imaginative knife holder adjustment:

- The complete width of the knife could be used by using straight forward blade fastening mechanism.
- Using the complete knife edge is cost effective, particularly in laboratories with high specimen throughput.

Continued on.....

YORLAB[®] MANUAL ROTARY MICROTOME (NEW) **Model No.: YSL / YSI-055**

**Technical Data:**

| | |
|---|--|
| Ranges of section thickness | 0.5 μm to 60 μm |
| Setting Values | from 0.5 μm to 2 μm in 0.5 μm increments from 2.0 μm - 10 μm in 1 μm increments from 10 μm - 20 μm in 2 μm increments from 20 μm - 60 μm in 5 μm increments |
| Section thickness | Viewing Window |
| Coarse Feed | Manual via coarse feed wheel |
| Trim Setting | 1mm 60 mm |
| Horizontal Stroke | Approx. 30 mm |
| Vertical Stroke | Approx. 60mm |
| Maximum Specimen Size | 50mm (L) x 60mm(H)x 40mm(W) |
| Specimen Orientation | H o r i z o n t a l : 8 ° , Vertical: 8°, Z: 360° |
| Dimension of basic instrument | |
| Width (including handwheel) | 455 mm |
| Depth (including section waste tray) | 510 mm |
| Height (with storage tray installed on housing) | 305 mm |
| Weight (With accessories) Approx | 26 Kg. |

General:

- Compact Ergonomic Overall Design.
- Accurate Specimen orientation with zero-point reference
- User safety incorporated into all aspects of the instruments
- Ergonomically located coarse feed wheel for fatigue free operation .
- Extremely smooth - running hand wheel.
- Precise knife holder lateral adjustment ensures that the entire width of the blade edge can be used .
- Single handed operation specimen clamps.
- Universal Knife holder base for different sizes of knives.
- Disposable blade holder with incorporated safety finger protection guard.
- Spacious section waste tray.
- One piece easy to clean housing.
- Automatic retraction.

Supplied complete with:-

- Cassette holder.
- Knife holder base.
- Standard knife holder.
- Object orientation unit.
- Section waste tray.
- Disposable blade (Pack of 50 Blades).